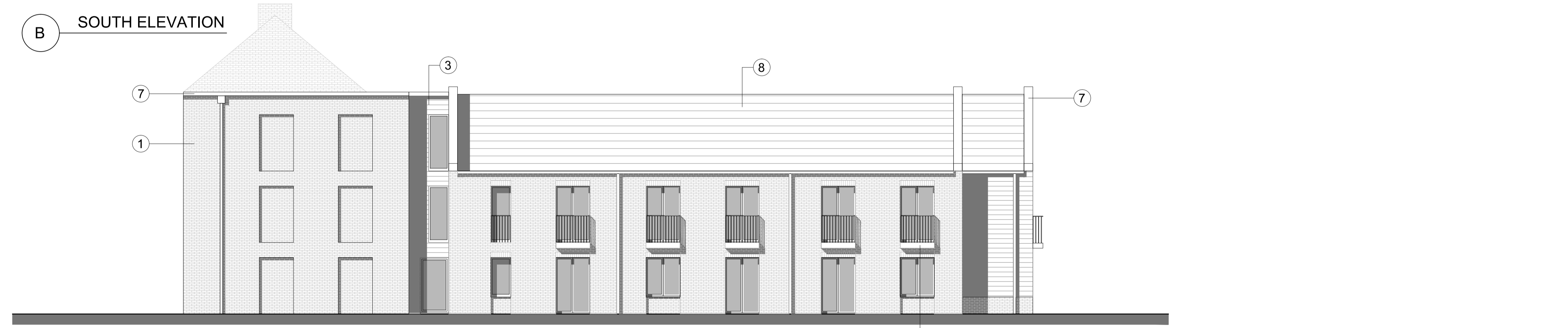


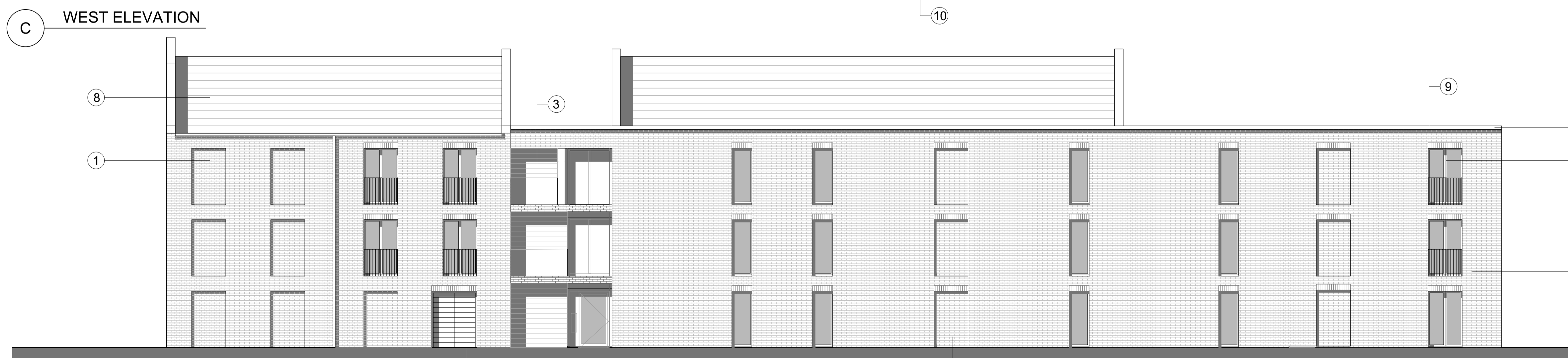
A EAST ELEVATION



B SOUTH ELEVATION



C WEST ELEVATION



D NORTH ELEVATION

All levels and dimensions must be checked on site by contractor prior to commencement of works. Any variations must be reported to Millson Group Ltd.

All information herein is the copyright of Millson Group Ltd. Copying in full or in part is forbidden without the written permission from Millson Group Ltd.

- Materials Key:
- ① Buff stock facing brick in stretcher bond with 20mm recessed coursing and 20mm recessed feature panels to selected elevations
 - ② Feature soldier course / stack bonding facing brickwork with 20mm recessed coursing
 - ③ Black Barn Cladding Feather Edge Boards 32 x 175mm
 - ④ Deep recessed (min 180mm) PCC aluminium framed windows with full length powder coated cill to all openings with metal Juliette balcony fixed with reveal or projecting. All to RAL : 7016 (anthracite grey) in selected locations
 - ⑤ PCC aluminium framed curtain walling, doors and panels coloured to RAL : 7016 (anthracite grey)
 - ⑥ Box gutter and downpipe RAL : 7016 (anthracite grey)
 - ⑦ Copings to parapet coloured to RAL : 7016 (anthracite grey)
 - ⑧ 40 degree pitched roof with fibre cement slates with matching plain angle ridge
 - ⑨ Single ply membrane dark grey mono roof behind parapet
 - ⑩ 500mm metal framed cantilevered projecting balcony with 1100mm high metal balustrades to RAL : 7016 (anthracite grey)

2	WALK WAY OMITTED	RB	23/04/21
1	FIRST ISSUE	XX	18/10/21
Rev:	Comments:	By	Date
Client:			

JIGSAW HOMES GROUP

Drawing:
Proposed Elevations

Drawing Number:
2539-EL-200-04

Scale:	Size:	Date:
1:100	A1	18/10/2020
Drawn:	Checked:	Rev:
XX	PJM	REV2
Status: PLANNING ISSUE		

Millson GROUP

Parsonage Chambers
3 Parsonage
Manchester M3 2HW

0161 228 0558
www.millsongroup.co.uk
info@millsongroup.co.uk

2539 NIELD STREET